

VEHICLE INSPECTION REPORT

YS67DDF

Ford Transit Custom 290 2.0 TDCi 105PS

Inspection

Serious Damage? No

Vehicle

VAT Plus VAT

V5 Present

Details

Reg. date 11/12/2017

Year 2017

Mileage 80,193 Miles Not Warranted

Fuel Type Diesel

Colour WHITE

VIN WF0YXXTTGYHK87505

Body Style Panel Van L1

MOT Due 03/10/2025

CAP Clean £4,500.00

CAP Average £3,825.00

CAP Below £2,900.00

Gearbox MANUAL

Gears 6

AD-BLUE, SIDE LOAD DOOR, ROOF RACK

Tyres

NSF

NSR

OSF

OSR

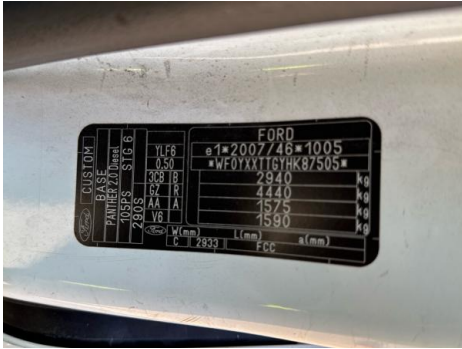
Spare

Features

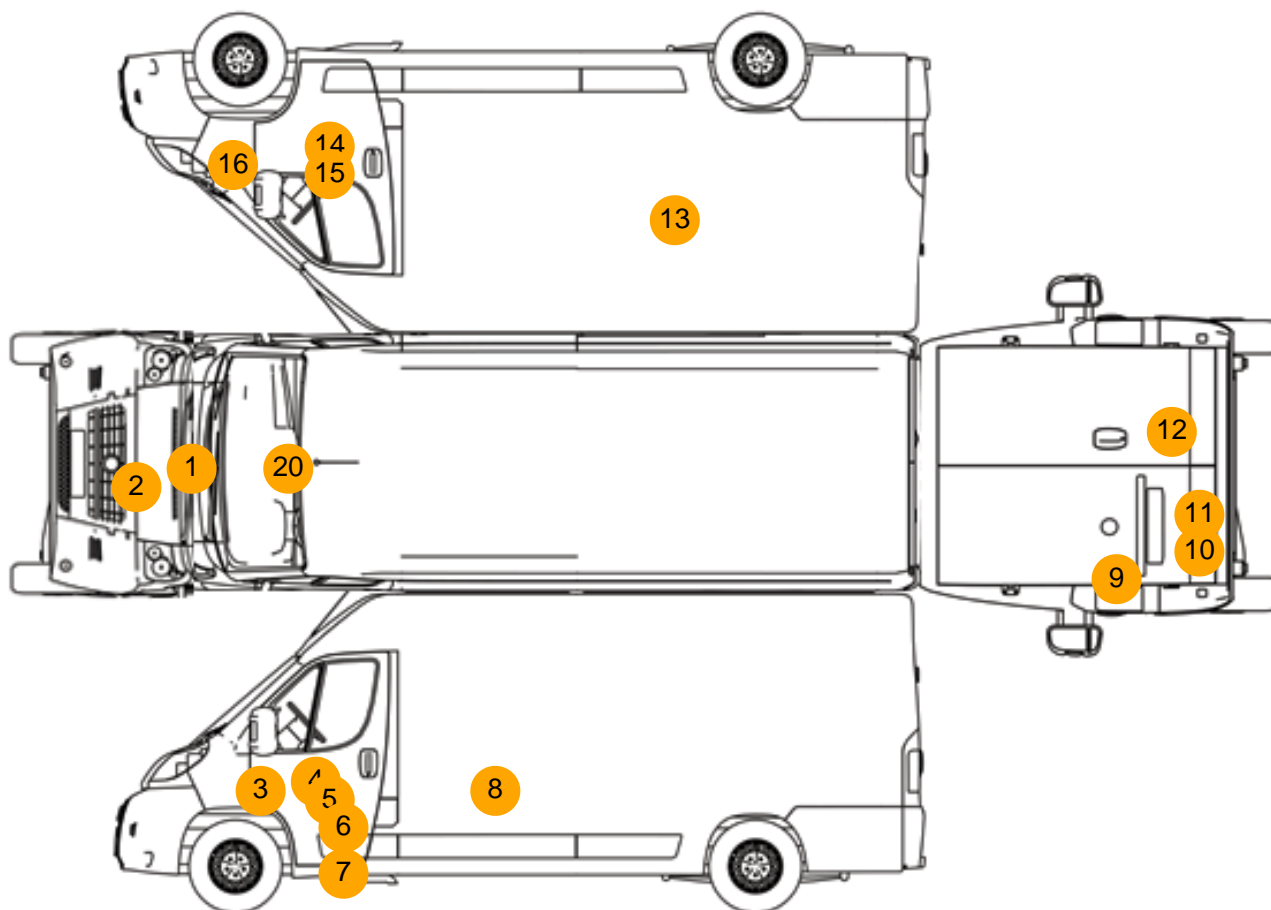
- Bluetooth connection
- Drivers airbag
- Auxiliary input socket
- Passenger airbag
- Digital radio
- Central locking
- Front electric windows
- Cloth seat trim

Photos





Condition Check



Damage Photos



1: Bonnet
Chipped
Multiple Chips



2: Panel Front
Chipped
Multiple Chips



3: Wing nsf
Scratched
Over 25mm Thru Paint



4: Door nsf
Scratched
Over 25mm Thru Paint



5: Door nsf
Dented
With Paint Damage



6: Door nsf
Scratched
Over 25mm Thru Paint



7: Door nsf
Dented
With Paint Damage



8: Qtr Panel nsr
Scratched
Over 25mm Thru Paint



9: Door nsr
Dented
Over 30mm



10: Door nsr
Chipped
Multiple Chips



11: Door nsr
Dented
Over 30mm



12: Door osr
Dented
Over 30mm



13: Qtr Panel osr
Scratched
Over 25mm Thru Paint



14: Door osf
Dented
Over 30mm



15: Door osf
Scratched
Over 25mm Thru Paint



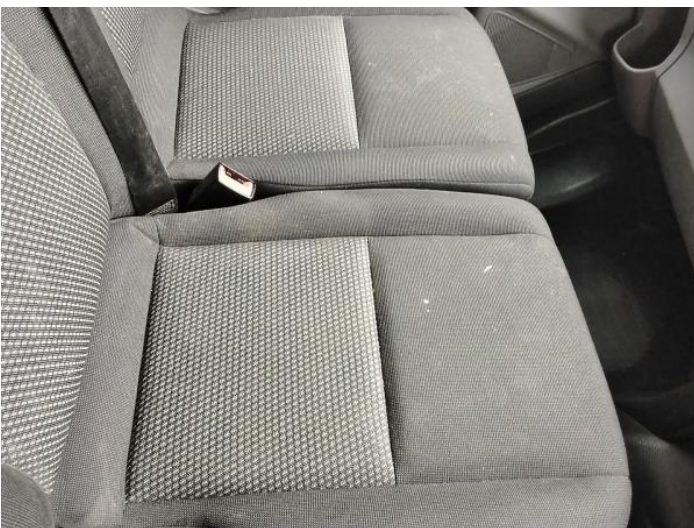
16: Wing osf
Scratched
Over 25mm Thru Paint



17: Door Pad osf
Soiled
Heavy



18: Seat Base Cover osf
Holed
Over 3mm



19: Seat Base Cover nsf
Soiled
Heavy



20: Screen Front
Scratched
Over 30mm

Interior

Carpet Condition		Upholstery Condition	
Seat Condition		Odour	
OK		Poor	
Poor		No	
Engine Runs	OK	No Excessive Smoking	OK
EML light illuminated	OK	DPF light illuminated	OK
ABS light illuminated	OK		